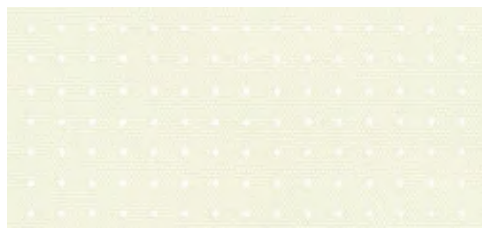


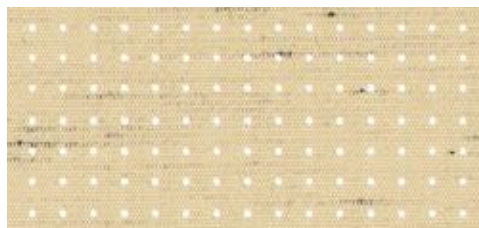
sunday specials



transolair Solar protection with a view. This sunvas fabric with special perforation technique stands for impressive transparency as well as good light and air permeability. This effectively reduces the build-up of a heat cushion between fabric and glass. | **vuscreen ALU** Solar protection with added functionality. The aluminium particles on the high-tech fibres ensure a better room climate yet the material still allows a good view outside. | **perfortex** Ideal for conservatories. Gaps in the warp, woven into the fabric, make the material permeable to both air and water. | **perla** This water-repellent sunvas fabric is an effective protection against both sun and rain. | **perla FR** This flame-resistant and water-repellent sunsilk fabric complies with strict fire retardancy regulations.



33809 transolair | <> 250 cm |



33847 transolair | <> 250 cm |



33837 transolair | <> 250 cm |



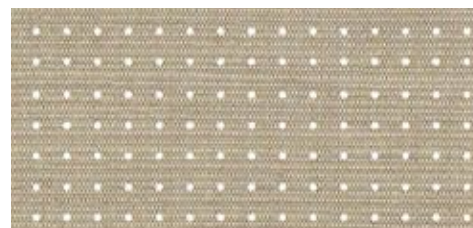
33857 transolair | <> 250 cm | □



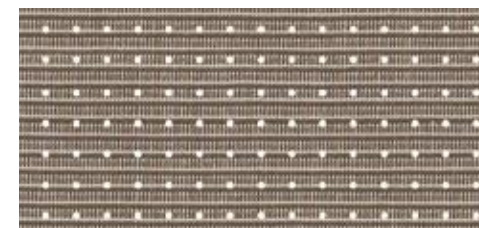
33849 transolair | <> 250 cm |



33877 transolair | <> 250 cm |



33950 transolair | <> 120 cm |



33987 transolair | <> 120 cm | □



33937 transolair | <> 120 cm |



33907 transolair | <> 120 cm |

□ Recommended for computer workplaces

<> Shadeplus covers made from panels 120 cm wide will be made up with a horizontal seam. As a result, fabrics with a textured or flecked pattern will take on a different appearance from that of the awning cover.

specials transolair

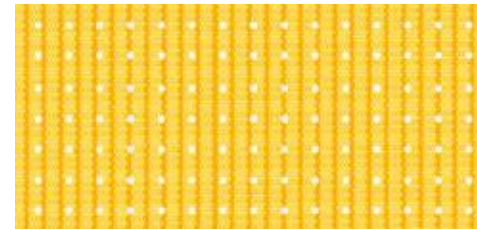


Solar protection with a view

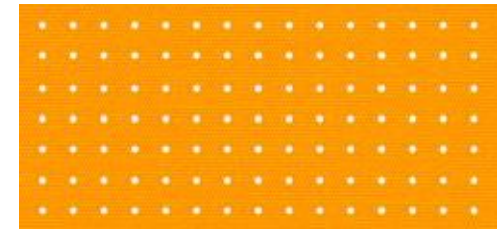
This sunvas fabric with special perforation technique stands for impressive transparency as well as good light and air permeability. We recommend transolair be used for the markilux shadeplus, side screens as well as vertical roller blinds and glass canopy awnings.

This perforated fabric maintains visual contact with the outdoors and shields against prying eyes at the same time.

It ensures good air circulation between the cover and the glass, effectively reducing the build-up of a heat cushion between fabric and glass. The creation of water troughs is minimised.



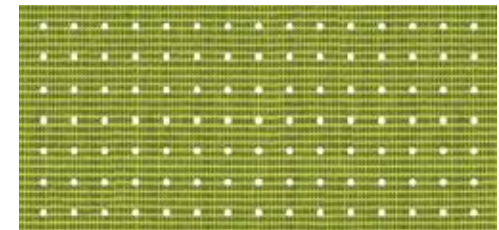
339 01 transolair | <> 120 cm |



338 31 transolair | <> 250 cm |



338 16 transolair | <> 250 cm |



339 96 transolair | <> 120 cm | □ |

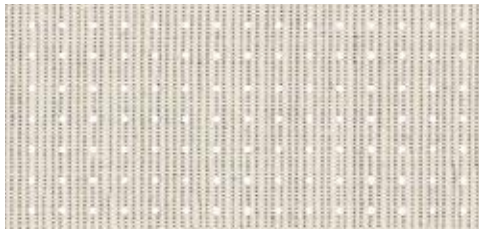


338 13 transolair | <> 250 cm | □ |

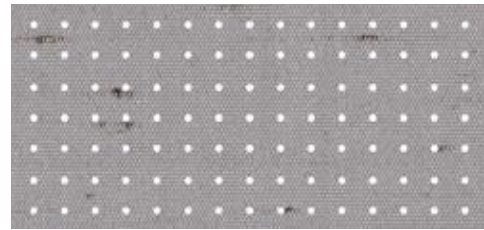


339 30 transolair | <> 120 cm | □ |

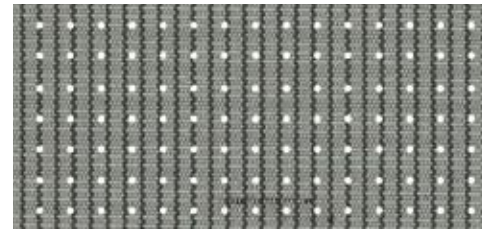
specials transolair



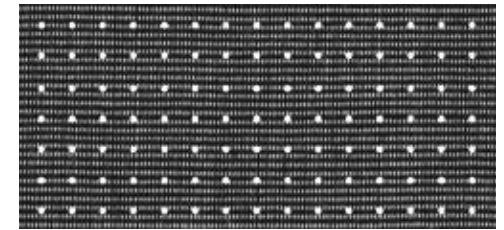
33927 transolair | <> 120 cm |



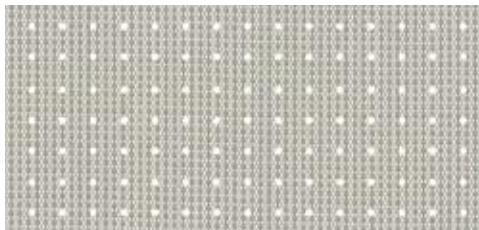
33844 transolair | <> 250 cm | □ |



33938 transolair | <> 120 cm | □ |



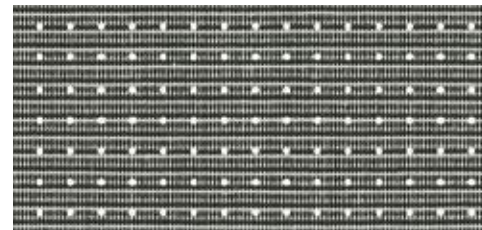
33997 transolair | <> 120 cm | □ |



33918 transolair | <> 120 cm |



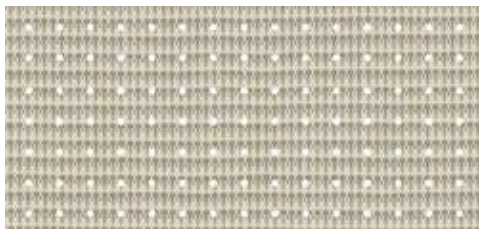
33808 transolair | <> 250 cm | □ |



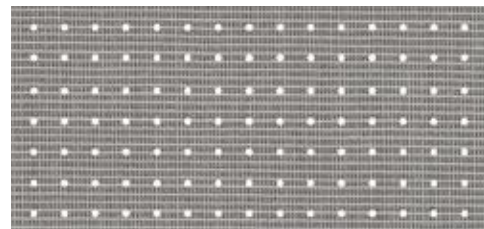
33983 transolair | <> 120 cm |



33858 transolair | <> 250 cm | □ |



33908 transolair | <> 120 cm |



33995 transolair | <> 120 cm |



33838 transolair | <> 250 cm | □ |



33828 transolair | <> 250 cm | □ |

□ | Recommended for computer workplaces

| <> | Shadeplus covers made from panels 120 cm wide will be made up with a horizontal seam.
As a result, fabrics with a textured or flecked pattern will take on a different appearance from that of the awning cover.